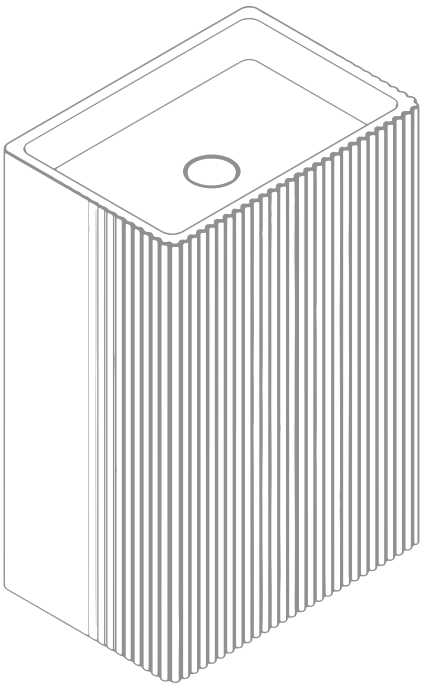


borrowed earth

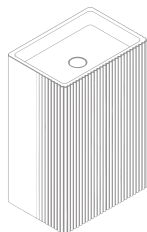


FREESTANDING BASIN — FLUTE

SPECIFICATION SHEET

INSTALLATION

IN THE BOX



1. Free Standing



2. Drain Kit
Mountain Plumbing Products
(MT740-2)
20 Hole brass lavatory grid
Drain with 6" Tailpiece and
no overflow.



3. Washer and Fastener

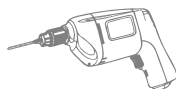
TOOLS REQUIRED



1. Pencil



2. Drain Pipe



3. Drilling Machine

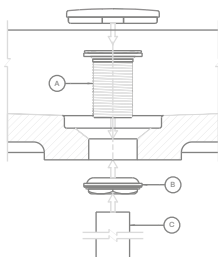


4. Bottom Holder
Use for wall mount
bracket waste pipe
in position



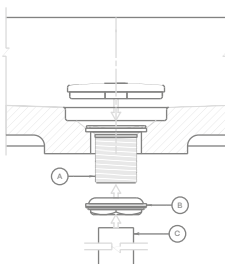
5. Screw Driver

DRAIN KIT



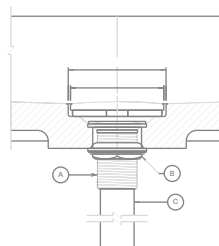
Step 1

1. Disassemble MT-740 into parts (A), (B), (C).
2. Insert grid drain (A) into washbasin drain opening.



Step 2

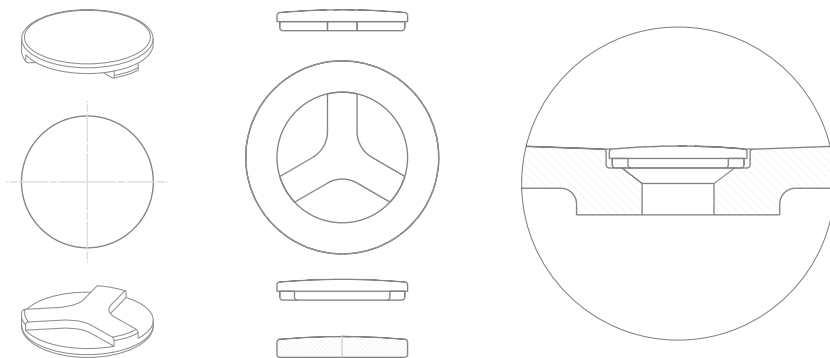
1. Secure grid drain (A) to the washbasin with locknut assembly (B)



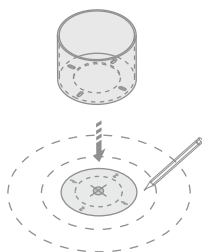
Step 3

1. Insert tailpiece (C) into grid drain (A).
2. Place stone drain cover into drain cover surface.

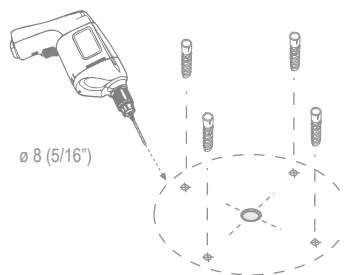
REMOVER STONE DRAIN COVER



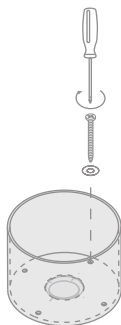
INSTALLATION



1. Mark the holes/pointers.



2. Drill the holes accordingly and place the anchor bolts.

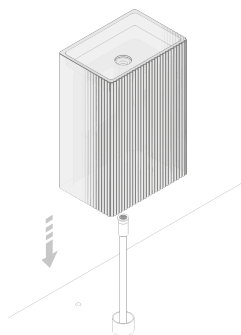
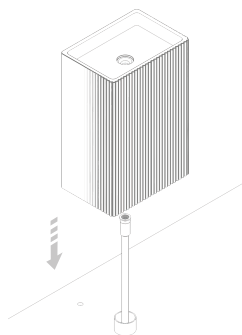


3. Screw the nuts along with washer.

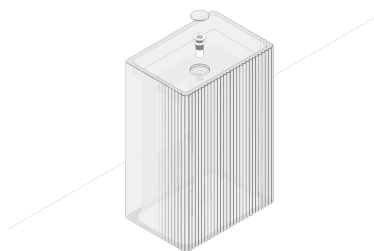
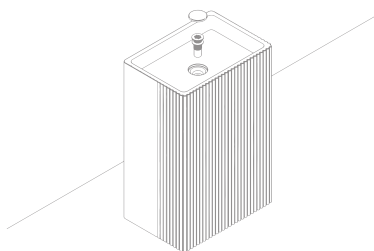


4. Place the waste drain Pipe in the wall mount bracket

INSTALLATION

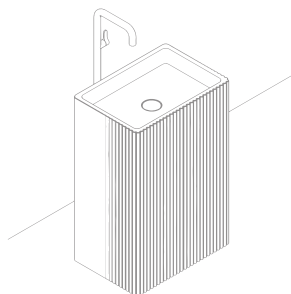
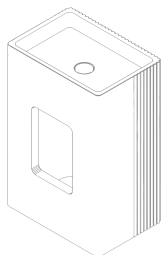


5. Place the bottom and top part as shown above



6. Place the top as shown above

OVERVIEW



borrowed earth

Borrowed Earth celebrates our inviolable connection to nature and attempts to recreate the innate joy of cohabiting amidst it.



+1 (310) 341-6931

+1 (323) 538-3630

WWW. BORROWEDEARTHCOLLABORATIVE.COM

INFO@ BORROWEDEARTHCOLLABORATIVE.COM