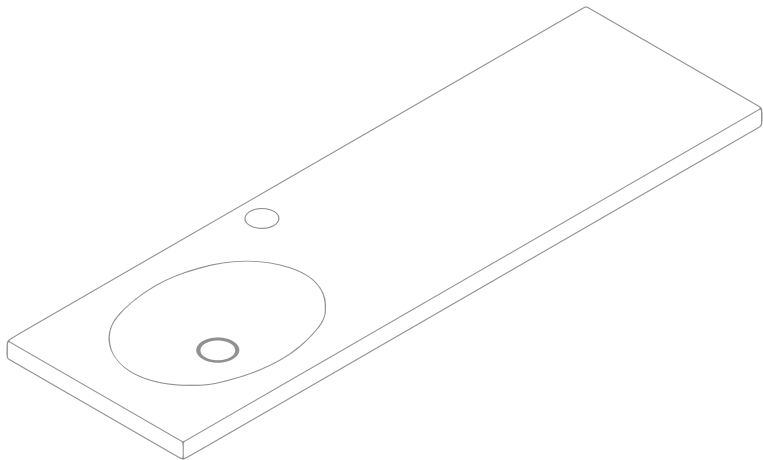


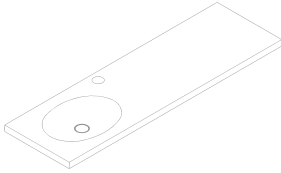
borrowed earth



INTEGRATED VANITY — FABRIC

SPECIFICATION SHEET

INSTALLATION IN THE BOX



1. Integrated Vanity Sink



2. Drain Kit
Mountain Plumbing Products
(MT740-2)
20 Hole brass lavatory grid
Drain with 6" Tailpiece and
no overflow.

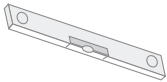


3. Wall Mount Bracket

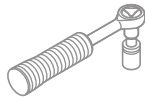


4. Washer and Fastener

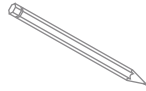
TOOLS REQUIRED



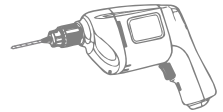
1. Level



2. Wrench

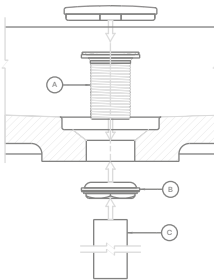


3. Pencil



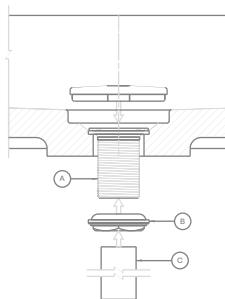
4. Drilling Machine

INSTALLATION DRAIN KIT



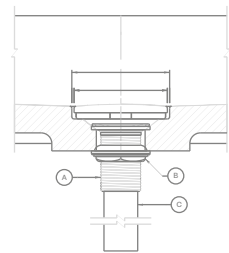
Step 1

1. Disassemble MT-740 into parts (A), (B), (C).
2. Insert grid drain (A) into washbasin drain opening.



Step 2

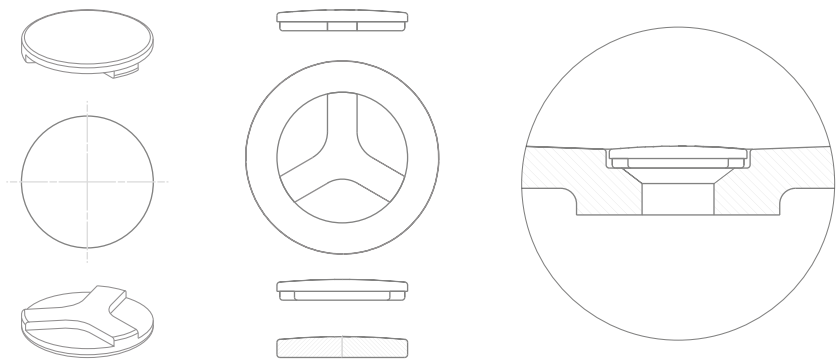
1. Secure grid drain (A) to the washbasin with locknut assembly (B)



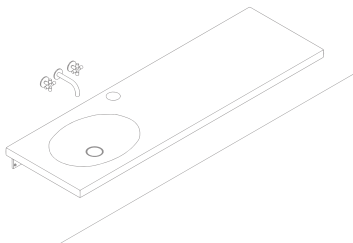
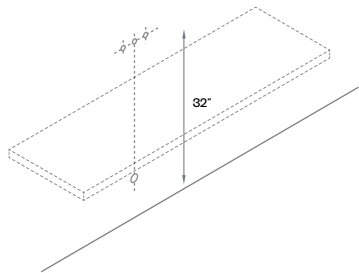
Step 3

1. Insert tailpiece (C) into grid drain (A).
2. Place stone drain cover into drain cover surface.

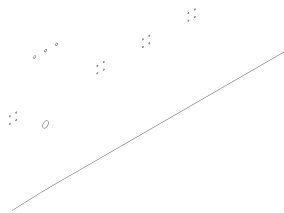
REMOVER STONE DRAIN COVER



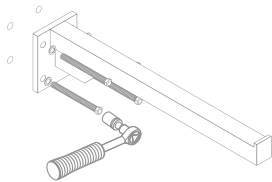
INTEGRATED VANITY PLACEMENT



INSTALLATION



1. Drill the holes for the wall mount bracket



2. Screw the wall mount bracket on the walls using Wrench and fastener

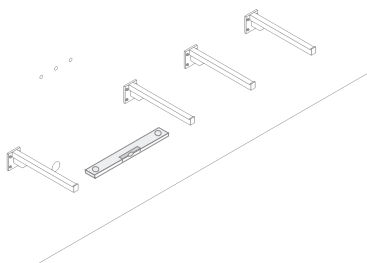
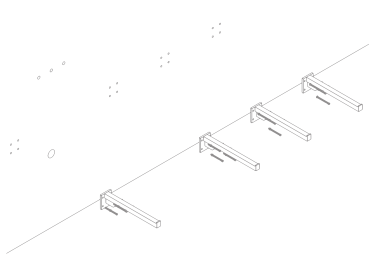
+1 (310) 341-6931

+1 (323) 538-3630

WWW. BORROWEDEARTHCOLLABORATIVE.COM

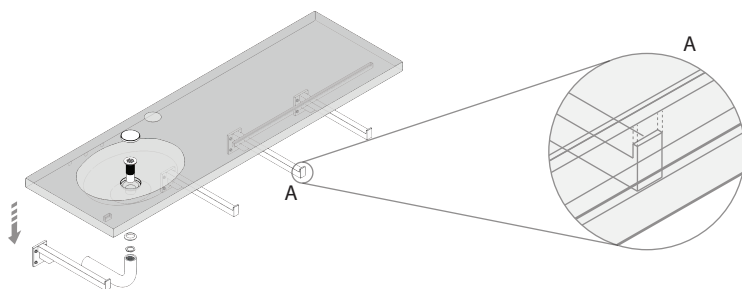
INFO@ BORROWEDEARTHCOLLABORATIVE.COM

INSTALLATION

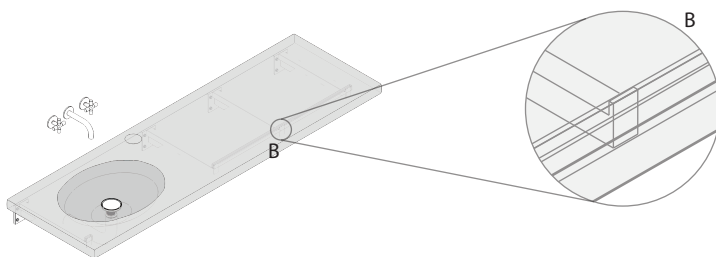


3. Place rest of the wall mount bracket

4. The wall mount bracket should be in level.



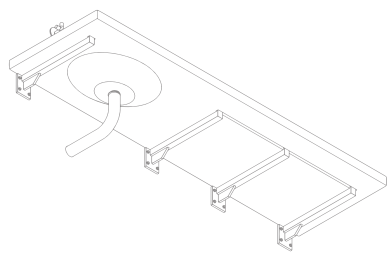
5. Place the drain kit with cap and Gently place the vanity on top of the wall mount bracket above and secure Position with groove (A)



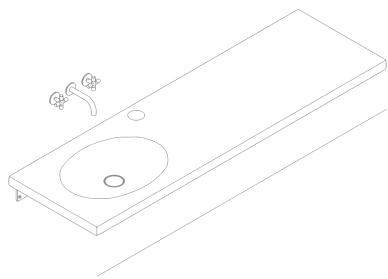
6. Place the top as shown above (B)

INTEGRATED VANITY

FABRIC



Bottom View



Top View

borrowed earth

Borrowed Earth celebrates our inviolable connection to nature and attempts to recreate the innate joy of cohabiting amidst it.



+1 (310) 341-6931

+1 (323) 538-3630

WWW. BORROWEDEARTHCOLLABORATIVE.COM

INFO@ BORROWEDEARTHCOLLABORATIVE.COM