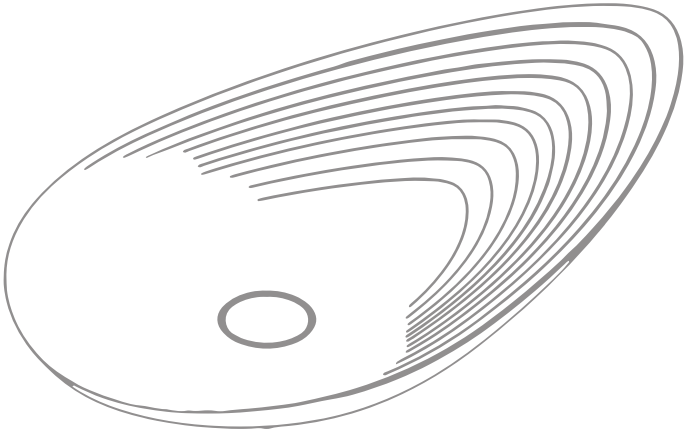
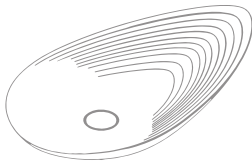


borrowed earth



SPECIFICATION SHEET

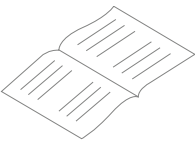
INSTALLATION
IN THE BOX



1. Over counter sink

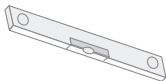


2. Drain Kit
Mountain Plumbing Products
(MT740-2)
20 Hole brass lavatory grid
Drain with 6" Tailpiece and
no overflow.

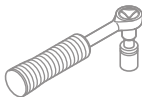


4. Manual

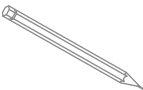
TOOLS REQUIRED



1. Level



2. Wrench

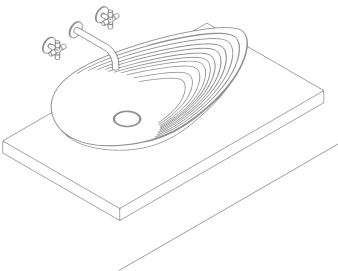
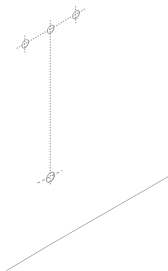


3. Pencil

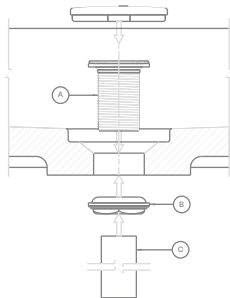


4. Silicone

OVER COUNTER PLACEMENT

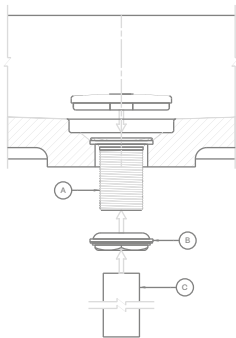


DRAIN KIT



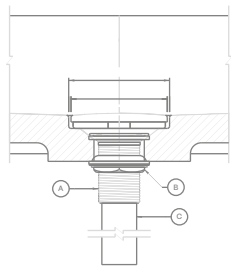
Step 1

1. Disassemble MT-740 into parts (A), (B), (C).
2. Insert grid drain (A) into washbasin drain opening.



Step 2

1. Secure grid drain (A) to the washbasin with locknut assembly (B)

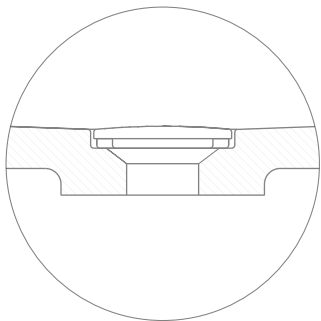
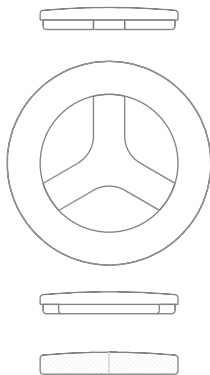
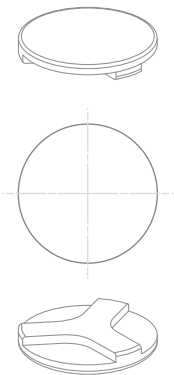


Step 3

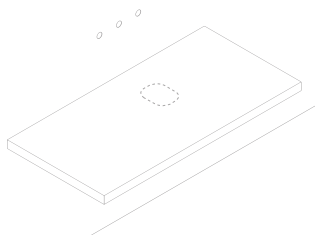
1. Insert tailpiece (C) into grid drain (A).
2. Place stone drain cover into drain cover surface.

INSTALLATION

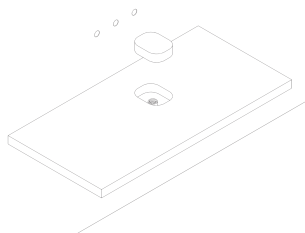
REMOVER STONE DRAIN COVER



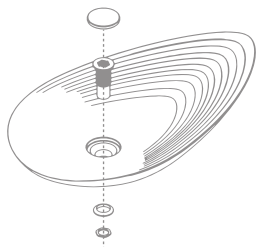
INSTALLATION



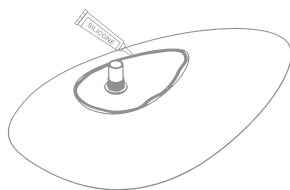
1. Use a slab of minimum 30mm thickness.



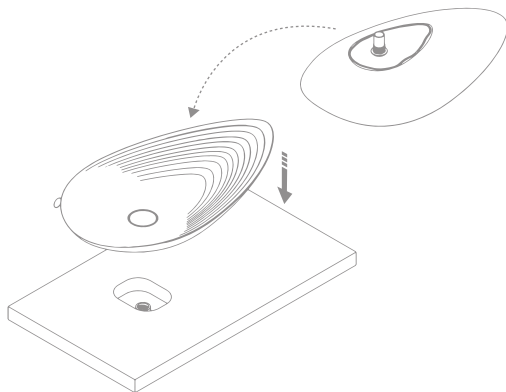
2. Drill the hole as shown in the diagram.



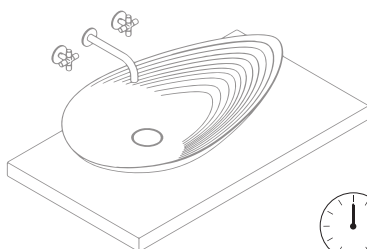
3. Place the drain kit in the over counter.



4. Flip the over counter then apply Silicone on the base's corner.



5. Gently place the over counter on the slab.



STOP 24 HR.

6. Wait 24 Hrs. for the silicone to dry.

borrowed earth

Borrowed Earth celebrates our inviolable connection to nature and attempts to recreate the innate joy of cohabiting amidst it.



+1 (310) 341-6931

+1 (323) 538-3630

WWW. BORROWEARTHCOLLABORATIVE.COM

INFO@ BORROWEARTHCOLLABORATIVE.COM